

2011-2012 COSTUME INFO

* RED COMPANY *

SONG: "Conga Remix"

DANCE STYLE: Jazz

TYPE & COLOR OF SHOES: Capezio Pedini --- *Caramel* (sold at BLD)

*must be this exact brand and color with no scuffs/holes

TYPE & COLOR OF TIGHTS: Capezio Ultra Soft Transition Tight --- *Caramel*

*must be this exact brand and color with no runs

HAIR STYLE: **Low side bun** Part over dancer's LEFT eye.

Pull tightly into a low bun right behind dancer's RIGHT ear.

Secure with hair net and bobby pins. Spray neatly so there are no hairs flying away.

*If you have short or thin hair, ask Tiffany about a sock bun!

ACCESSORIES TO BE WORN: 1) Orange Choker around neck. 2) Company earrings.
3) Clear strap on L shoulder.

*We will NOT wear the extra cuff for the Left arm.

MAKEUP: Please see makeup sheet. All makeup will remain the same for all dances, aside from LIPSTICK.

Lipstick - Fuzion (bright Red)

SPECIAL NOTES: NO straps showing aside from the single clear strap! You may wear a bra underneath if needed, but it must be strapless!

REMINDERS: *NO JEWELRY *NO NAIL POLISH *NO HOLES IN TIGHTS / SHOES *NO DIRT ON SHOES



Contact Info for Emergencies:

Amber (512) 767-2677 or amber@dancexplosionaustin.com
Morgan (512) 626-8858 or morgan@dancexplosionaustin.com
Tiffany (612) 804-2777 or tiffany@dancexplosionaustin.com

2011-2012 COSTUME INFO

* RED COMPANY *

SONG: "Here Come the Judge"

Judges' Costume

DANCE STYLE: Tap

TYPE & COLOR OF SHOES: Capezio "Fluid" lace-up, oxford --- *Black*

*must be this exact brand and color with no scuffs/holes

TYPE & COLOR OF TIGHTS: Capezio Ultra Soft Transition Tight --- *Caramel*

*must be this exact brand and color with no runs

HAIR STYLE: Part over dancer's LEFT eye. Pull tightly into a low bun centered at the nape of the neck. Secure with hair net and bobby pins. Spray neatly so there are no hairs flying away.

*We're going for a tight, sleek, stern look!

*If you have short or thin hair, ask Tiffany about a sock bun!

ACCESSORIES TO BE WORN: 1) Company earrings

PROPS TO BE KEPT AND BROUGHT BY DANCER: Small Gavels only.

Tiffany will bring and keep large gavel and props.

MAKEUP: Please see makeup sheet. All makeup will remain the same for all dances, aside from LIPSTICK.

Lipstick - Fuzion (bright Red)

SPECIAL NOTES: 1) Tuck White top into pants.

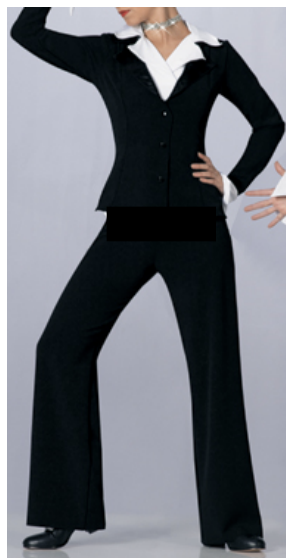
2) Put a safety pin over the top of the zipper on the pants to secure.

3) Pin or tack sleeve cuffs up - keep it this way even after performing.

4) Permanently pin or tack black collar down so it doesn't flap around.

5) Secure white collar down at each performance either with sewn Velcro or safety pins to the black jacket.

REMINDERS: *NO JEWELRY *NO NAIL POLISH *NO HOLES IN TIGHTS / SHOES *NO DIRT ON SHOES



Contact Info for Emergencies:

Amber (512) 767-2677 or amber@dancexplosionaustin.com
Morgan (512) 626-8858 or morgan@dancexplosionaustin.com
Tiffany (612) 804-2777 or tiffany@dancexplosionaustin.com

2011-2012 COSTUME INFO

* RED COMPANY *

SONG: "Here Come the Judge"

Erica's Costume

DANCE STYLE: Tap

TYPE & COLOR OF SHOES: Capezio "Fluid" lace-up, oxford --- *Black*

*must be this exact brand and color with no scuffs/holes

TYPE & COLOR OF TIGHTS: Capezio Ultra Soft Transition Tight --- *Caramel*

*must be this exact brand and color with no runs

HAIR STYLE: *Low ponytail* Part over dancer's LEFT eye.

Pull tightly into a low ponytail centered at the nape of the neck.

Spray neatly so there are no hairs flying away. *We're going for a tight, sleek look!

ACCESSORIES TO BE WORN: 1) Company earrings

MAKEUP: Please see makeup sheet. All makeup will remain the same for all dances, aside from LIPSTICK.

Lipstick - Fuzion (bright Red)

SPECIAL NOTES: 1) Tights are the only thing to be worn underneath!

2) A bra top may be worn if no straps are showing.

3) Safety pin or sew/tack the sleeve rolls so that they don't come unrolled during performance.

4) Safety pin or sew/tack collar down so it doesn't flap during performance.

REMINDERS: *NO JEWELRY *NO NAIL POLISH *NO HOLES IN TIGHTS / SHOES *NO DIRT ON SHOES



Contact Info for Emergencies:

Amber (512) 767-2677 or amber@dancexplosionaustin.com
Morgan (512) 626-8858 or morgan@dancexplosionaustin.com
Tiffany (612) 804-2777 or tiffany@dancexplosionaustin.com

2011-2012 COSTUME INFO

* RED COMPANY *

SONG: "Lovely"

DANCE STYLE: Lyrical

TYPE & COLOR OF SHOES: Capezio Pedini --- *Caramel* (Sold at BLD)

*must be this exact brand and color with no scuffs/holes

TYPE & COLOR OF TIGHTS: Capezio Ultra Soft Transition Tight --- *Caramel*

*must be this exact brand and color with no runs

HAIR STYLE: **Low side bun** Part over dancer's LEFT eye.

Pull tightly into a low bun right behind dancer's RIGHT ear.

Secure with hair net and bobby pins. Spray neatly so there are no hairs flying away.

*If you have short or thin hair, ask Tiffany about a sock bun!

ACCESSORIES TO BE WORN: 1) Company earrings

MAKEUP: Please see makeup sheet. All makeup will remain the same for all dances, aside from LIPSTICK.

Lipstick - "Back Pocket" (the darker burgundy color)

SPECIAL NOTES: 1) Sparkly shoulder strap sits on dancer's RIGHT shoulder.

2) NO straps showing, aside from CLEAR!

REMINDERS: *NO JEWELRY *NO NAIL POLISH *NO HOLES IN TIGHTS / SHOES *NO DIRT ON SHOES



Contact Info for Emergencies:

Amber (512) 767-2677 or amber@dancexplosionaustin.com
Morgan (512) 626-8858 or morgan@dancexplosionaustin.com
Tiffany (612) 804-2777 or tiffany@dancexplosionaustin.com